

*Doctorphonette* NEO II

# Doctorphonette NEO No.188 II

Guidance ver.1.0

# Product Outline

## Doctorphonette NEO No.188 II

### ■ 4 types of diaphragms are available

◇ Suspended Diaphragm Large and Small  
: This type of diaphragm enables to change frequency from high to low by placing it harder or softer.

Low-frequency  
by placing  
softer



◇ Standard Diaphragm Large and Small  
: Low-cut High-pass design  
This type of diaphragm is dedicated to auscultate high frequency noise.  
(specialized for respiratory auscultate )

High-frequency  
by placing  
harder



### ■ Ear friendly design

- ◇ Moving binaural
- ◇ Adjustable spring

- ◇ Moving soft ear piece
- ◇ Sealing ear piece



# 4 Types of Diaphragms

- ① Suspended Diaphragm Large
- ② Suspended Diaphragm Small
- ③ Standard Diaphragm Large
- ④ Standard Diaphragm Small



**Diaphragm changing**

# Suspended Diaphragms

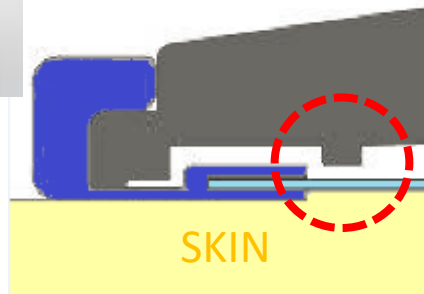
(Same Diaphragm design as Littmann)

- This diaphragm enables to change frequency from high to low by placing it harder or softer.
- When placing softer, low-frequency sound can be heard dynamic.  
= Uses think "This stethoscope is very clear with big sound."

Low-frequency auscultation by placing softer



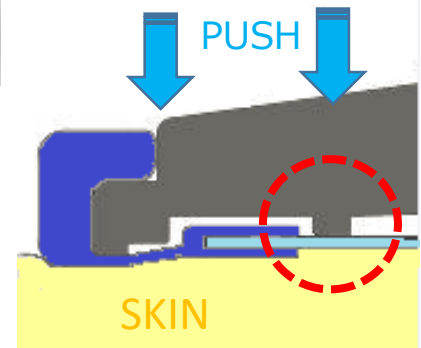
When placing it softer, the diaphragm is slightly displaced from the inner ring. It enables diaphragm to vibrate slowly and auscultate low-frequency sound.



High-frequency auscultation by placing harder



The diaphragm is touching to inner ring by placing it harder. It enables diaphragm to vibrate little and auscultate high-frequency sound.



# Standard Diaphragms

(Kenzmedico's traditional design)

- Standard Diaphragm is dedicated to auscultate high frequency noise.

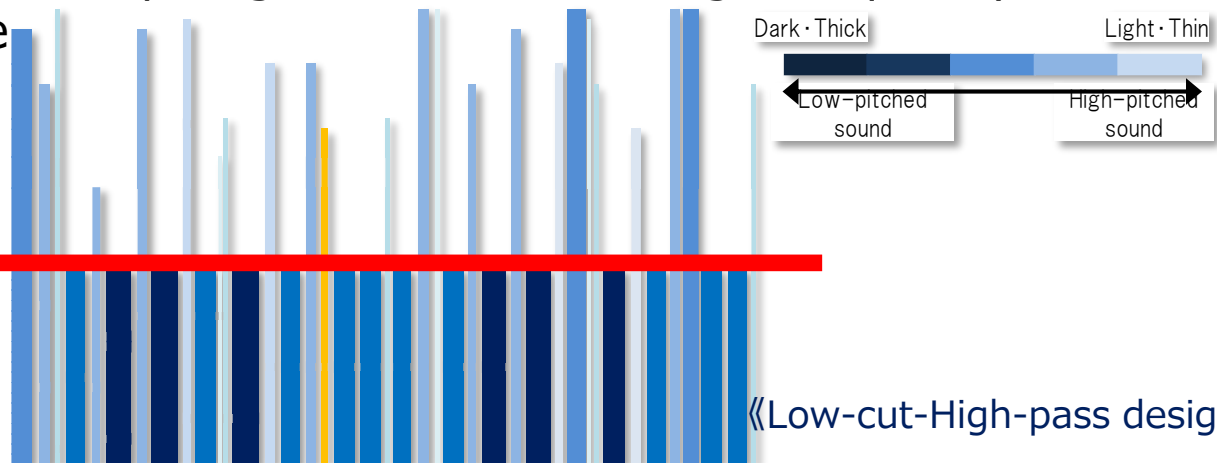
Specialized for respiratory auscultate.

Diaphragm is made from hard material, and it cuts low-frequency sound. It makes possible to auscultate abnormal sound of high-frequency sound clearly (Low-cut High-pass design).

※No need to placing the diaphragm harder to auscultate high-frequency sound.

※Only a small part of diaphragm touches skin, high-frequency auscultate is possible

Diaphragm surface cuts extra Low-pitched sound.



# Advantage and Disadvantage of Suspended design and Standard design



## Suspended Diaphragm

- Same design as Littmann
- When placing softer, low-frequency sound can be heard dynamic.
- specialized for cardiac auscultate
- One side of diaphragm enables to auscultate Low-pitched and High-pitched sound.

## Disadvantage

- Need to push it harder to auscultate High-pitched sound.
- In case, a patient is skinny, it is hard to auscultate High-pitched sound since the overall diaphragm has to be touched to the skin.
- Even though it is pushed harder, standard design is superior in High-pitched sound.

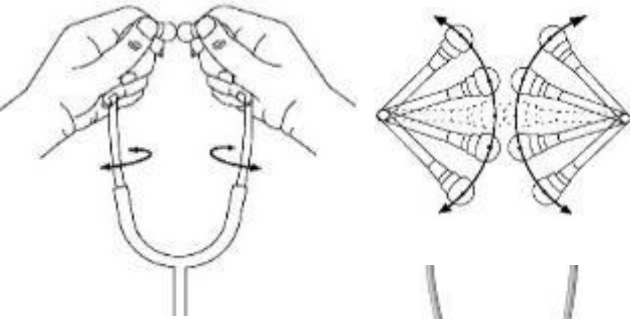
## Standard Diaphragm

- specialized for respiratory auscultate with clear sound.
- No need to push harder for auscultating High-pitched sound.
- Only a small part of diaphragm touches skin, high-frequency auscultate is possible

- Sound less dynamic.
- Not specialized for Low-pitched sound auscultate.



# Ear Friendly Design



## Moving Binaural

Binaural angle is adjustable.

## Adjustable and Tough Spring

Spring compression is adjustable.

It enables for uses to ware the stethoscope for a long time.

## Moving Soft Ear Piece

When uses ware the stethoscope, the ear piece fits to acoustic pore.

Less stressful for less friction in ear.

## Sealing Ear Piece

4 different kind of Sealing Ear pieces come with the stethoscope.

\* Sealing Ear Piece does not move.



# For Better Sound

## Made of 100% Stainless

Not only chest pieces but also binaural is made of stainless for the better sound.



## Two in One Tube

The ways sound reach to ears are independent. Sound will not be mixed up nor decayed.



# Comparison table between *Doctorphonette NEO II* and Littmann

	Stethoscope for medical use	
Manufacturer	3M Littmann	KENZMEDICO
Model name	Master Cardiology III	<b>Doctorphonette NEO No.188 II</b>
Material of chest piece	Stainless	Stainless
Material of binaural	Stainless	Stainless
Binaural angle adjust	×	○
Diaphragm (Adult)	○	○
Bell (Adult)	○accessory	○
Diaphragm (( Pediatric)	○	○accessory
Bell(Pediatric)	×	○accessory
Suspended diaphragm	○	○
Tube	two-in-one	two-in-one
Rotating ear tip	×	○
Antibacterial treatment	×	×
Repairable spring equipped with binaural	×	○
Length	69cm	71 cm
Weight	180g	200g
Number of tube color	12	7
	